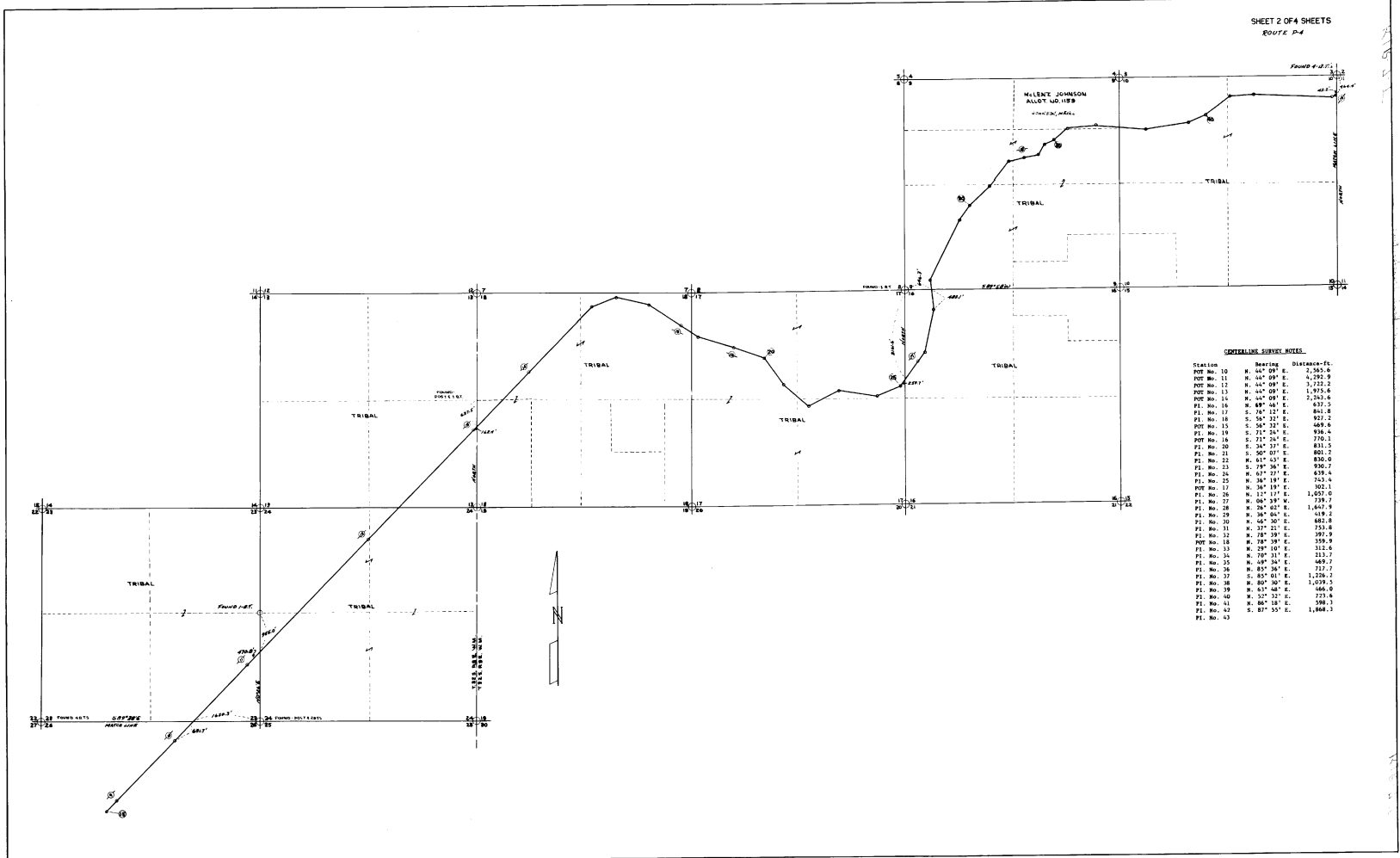


K/R 7.7

SHEET 2 OF 4 SHEETS  
ROUTE 24



CUTLINE SURVEY NOTES

Station	Bearing	Distance-Ft.
POB No. 10	N. 44° 09' E.	5,260.6
POB No. 11	N. 44° 09' E.	4,292.9
POB No. 12	N. 44° 09' E.	3,722.2
POB No. 13	N. 44° 09' E.	1,975.6
POB No. 14	N. 44° 09' E.	1,260.6
PI No. 15	N. 89° 46' E.	637.5
PI No. 16	S. 78° 12' E.	841.8
PI No. 17	S. 56° 37' E.	927.2
PI No. 18	S. 54° 22' E.	469.6
PI No. 19	S. 71° 24' E.	936.4
PI No. 20	S. 71° 24' E.	770.1
PI No. 21	S. 34° 37' E.	831.5
PI No. 22	S. 50° 07' E.	801.2
PI No. 23	N. 61° 43' E.	830.0
PI No. 24	S. 79° 34' E.	930.7
PI No. 25	N. 67° 27' E.	639.4
PI No. 26	N. 34° 19' E.	743.4
POB No. 27	N. 34° 19' E.	362.1
PI No. 28	N. 17° 17' E.	1,057.0
PI No. 29	N. 06° 39' W.	739.7
PI No. 30	N. 28° 02' E.	1,467.9
PI No. 31	N. 36° 04' E.	419.2
PI No. 32	N. 45° 30' E.	462.8
PI No. 33	N. 37° 21' E.	743.8
PI No. 34	N. 78° 39' E.	359.9
PI No. 35	N. 78° 39' E.	359.9
PI No. 36	N. 79° 31' E.	213.7
PI No. 37	N. 49° 34' E.	469.7
PI No. 38	N. 85° 34' E.	717.7
PI No. 39	S. 85° 01' E.	1,250.7
PI No. 40	N. 80° 30' E.	1,039.5
PI No. 41	N. 43° 48' E.	480.0
PI No. 42	N. 52° 32' E.	751.8
PI No. 43	N. 86° 18' E.	788.1
PI No. 44	S. 87° 55' E.	1,668.1
PI No. 45		